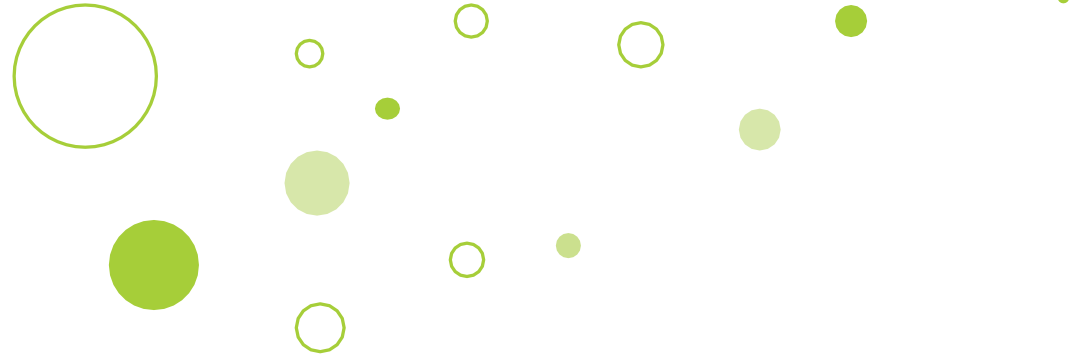




ORCID
RUTGERS
Better Together



Quick Guide for Using ORCID in SciENcv to Create NIH biosketches for Grant Proposals

Rutgers University Libraries

December 4, 2020

SciENcv and ORCID

SciENcv: a biosketch development tool

Using ORCID iD to populate SciENcv

Create your ORCID iD if you haven't

Link your ORCID to SciENcv

Link Your ORCID iD to SciENcv

1

Log into your NCBI account at PubMed



2

On the Dashboard, click your username



3

Under Account Settings, go to Linked Accounts, Click the blue Change button. Search for ORCID. Select ORCID under Login Account Options, then enter your ORCID username and password, and authorize it. Now you should see your ORCID account listed in your Linked Accounts as shown below

Linked accounts *You can sign in via these 3rd-parties. Contact the 3rd party for sign-in related issues.*

eRA Commons	yzhang@ca.rutgers.edu
ORCID	yzhang@rutgers.edu

[Change](#)

Use ORCID in SciENcv

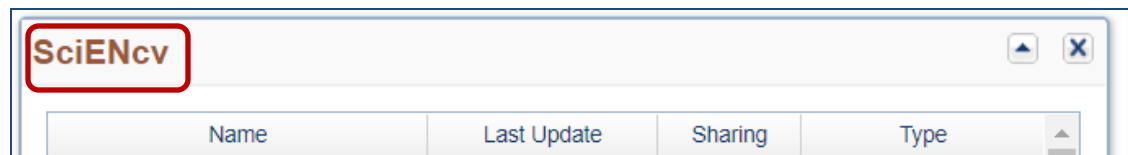
4

Now back to your dashboard by clicking My NCBI on the upper right corner



5

Go to the SciENcv tool box



6

Open SciENcv, you may start creating a new biosketch or modify an existing one. In the C. section, you may select citations from ORCID

C. Contribution to Science [Done]

You can add up to 5 contributions. Drag and drop tabs to rearrange.

[Add another contribution](#)

1 2 3 [Delete this contribution](#)

Description [edit](#)

Citations [Save citations]
Please include up to four citations that are relevant to this contribution.

My Bibliography ORCID

Sort by: Publication date Select: None 0 item(s) selected [Add citations](#) [Go to My Bibliography](#) unchecked entries are hidden from display

Zhang Y, Parry K. Health Sciences and Public Librarians Partnering to Create a Culture of Health. Journal of Consumer Health on the Internet. 2018 May 15; 22(2). Available from: <https://www.tandfonline.com/doi/abs/10.1080/15398285.2018.1434348> journalCode=wchi20 DOI: <https://doi.org/10.1080/15398285.2018.1434348>